

Make your selection.

"We're changing the world with technology."
— Bill Gates

And technology is changing our lives, too. Entertainment and speed dominate our world, and there are so many options to keep us connected. Whether we need directions to our next destination, want to share a photo of life's latest precious moment through social media, or want to catch the local high school basketball game on TV: a telecommunications company is providing that most important connection.



Thomas E. Preston
Chief Executive Officer

Duo County Telecom has offered that connection to south central Kentucky for 59 years. From the eight-party line to wireless phones and digital TV, we've come a long way — and we continue to forge ahead in providing the most cutting-edge technology to our service area.

Our Lightspeed fiber optic network is an excellent example of our dedication to this effort. Many of our customers now enjoy all of their Duo services — telephone, Internet, wireless and digital TV — through one incredibly fast connection boasting crystal clear voice and HD quality. Fiber services are still unavailable to the vast majority of Kentuckians, making our effort to install and expand this network extremely progressive.

What better way to enjoy this excellent quality than to have a wide variety of options at your fingertips? We continue to add HD channels and Video on Demand options to our line-up, while growing an already robust live and local programming schedule. And our selection of innovative wireless devices will keep your wish-list full.

Our ultimate goal is to keep you connected. So, make your selection. We have many great things to offer.

ADDRESS BOOK ✕

FIND YOUR DUO



Jamestown Customer Care Center
2150 North Main Street, Jamestown, KY 42629



Columbia Customer Care Center
221 Dohoney Trace, Columbia, KY 42728

CONTACT US

343-3131	Russell
378-4141	Adair
433-2121	Cumberland
duotel@duo-county.com	E-mail

FOLLOW US







annual financial statement

Duo County Telecom
Consolidated **BALANCE SHEET**
December 31, 2012

ASSETS

Current Assets:	
Cash & Temporary Cash Investments	\$15,893,213
Accounts Receivable, Less Allowance for Doubtful Accounts	1,670,608
Materials and Supplies	2,182,369
Accrued Interest Receivable	131,223
Prepaid Expenses	326,662
Total Current Assets	\$20,204,075

Other Assets:	
Long-Term Investments	\$18,222,453
Nonregulated Investments	214,329
Investment in Affiliated Companies:	44,044,434
Deferred Charges	2,659,344
Total Other Assets	\$65,140,560

Telecommunications Plant:	
Telecommunications Plant in Service	\$82,861,416
Telecommunications Plant Under Construction	13,452,814
Non-Operating Plant	52,008
Total Telecommunications Plant	\$96,366,238
Less Accumulated Depreciation	\$54,034,787
Telecommunications Plant Net	\$42,331,451

TOTAL ASSETS	\$127,676,086
---------------------	----------------------

LIABILITIES & MEMBERS' EQUITIES

Current Liabilities:	
Current Portion of Long-Term Debt	\$2,737,129
Accounts Payable	746,441
Customer Deposits	14,400
Income Taxes Payable	1,427,309
Accrued Expenses	1,891,678
Total Current Liabilities	\$6,816,957

Deferred Income Taxes-Noncurrent	\$10,621,004
Total Long-Term Liabilities	\$10,621,004
Other Liabilities and Deferred Credits	\$164,503

Members' Equities:	
Patronage Capital	\$48,867,699
Other Equities	60,052,870
Acc. Other Comprehensive Income/Loss	16,066
Other Member Capital	1,136,987
Total Members' Equities	\$110,073,622

TOTAL LIABILITIES/MEMBERS' EQUITIES	\$127,676,086
--	----------------------

Duo County Telecom
Consolidated **STATEMENT OF INCOME**
For Year Ended December 31, 2012

Operating Revenues:	
Local Network Services	\$8,335,707
Network Access Services	9,555,695
Carrier Billing and Collection	103,771
Miscellaneous Operating Revenue	1,721,971
Uncollectible Revenue	(105,481)
Total Operating Revenues	\$19,611,663

Operating Expenses:	
Plant Specific Operations	\$7,885,604
Plant Nonspecific Operations	1,422,164
Depreciation and Amortization	5,538,945
Customer Operations	1,548,282
Corporate Operations	2,409,932
Total Operating Expenses	\$18,804,927

Total Operating Income	\$806,736
-------------------------------	------------------

Non-Operating Income	\$14,339,128
Provision for Income Taxes	(5,587,289)
Total Income	\$8,751,839

Interest on Long-Term Debt to RUS	(310,572)
Non-Regulated Income	\$1,115,755
Total Net Income	\$10,363,758

Other Comprehensive Income — Change in Unrealized Gain/Loss on Marketable Securities	\$16,066
TOTAL COMPREHENSIVE INCOME	\$10,379,824

leadership

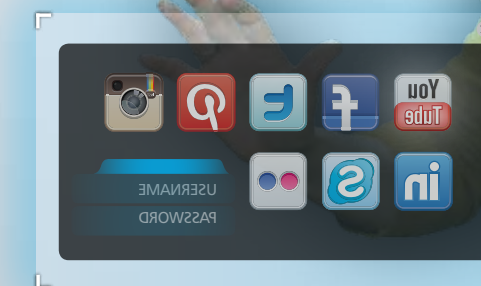
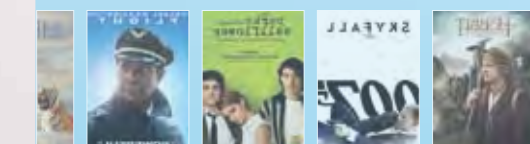
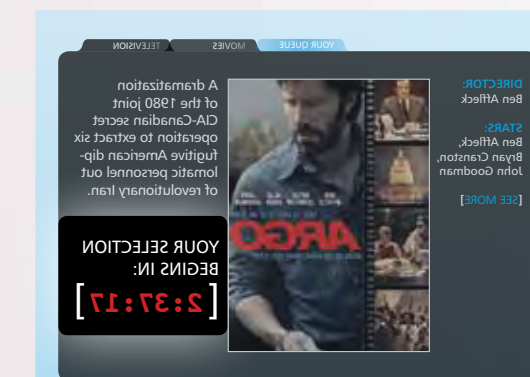
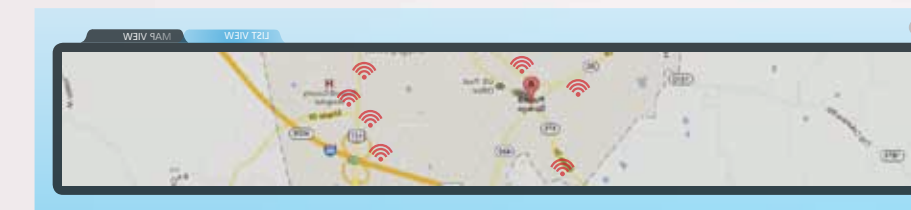
duo county board of directors

James E. Monin, MD Jamestown, President	Jerry D. Roy Russell Springs, Member
Bill Norris Cumberland County, Vice President	Randy Hart Russell Springs, Member
Sharon Hill Jamestown, Secretary	Douglas Butler Cumberland County, Member
Joseph Sparks Adair County, Member	Howard Kent Cooper Legal Counsel
	Thomas E. Preston Chief Executive Officer

We are pleased to report that Duo County Telecom is returning a healthy dividend to cooperative members in 2013 and has returned **ALMOST \$18 MILLION SINCE 1984.**



MAKE YOUR SELECTION
MAKE YOUR SELECTION
2013 COMMUNITY REPORT



Service app-titude.

When it comes to customer service, no company is better at it than Duo. Our goal is to offer you a wide variety of ways to connect with your services and with us. In 2012, we added even more features to help you with your service needs. Our Duo Customer Care Center is now available 24 hours a day, 365 days a year — including holidays! And our new online My Account Care portal makes account maintenance easier than ever, with options to pay your bill, review account details and more. Exciting things are on the horizon in 2013 — our My Duo app for iPhone and Android will be released later this year, giving you access to many of your favorite Duo help services on the go.

COMING SOON
to Google Play
and the App Store



DUO CUSTOMER CARE CENTER

LIVE CHAT INITIATES IN:
[0:13]

DUOCARE ASSISTANCE:

MY ACCOUNT CARE LOGIN

Username
Password

MY DUO FEATURES

With Duo County's mobile app, you'll have access to these great features:

- Lake Cam
- MyEmail checker
- Now Playing on Video on Demand searchable database
- Online Directory
- Troubleshoot your Internet connection
- DUO2 programming schedule
- Latest deals on wireless, digital TV and landline



Local sports coverage is LIVE on Duo County's DUO2. Watch our listings for the latest from Russell and Adair County high schools plus Lindsey Wilson College.

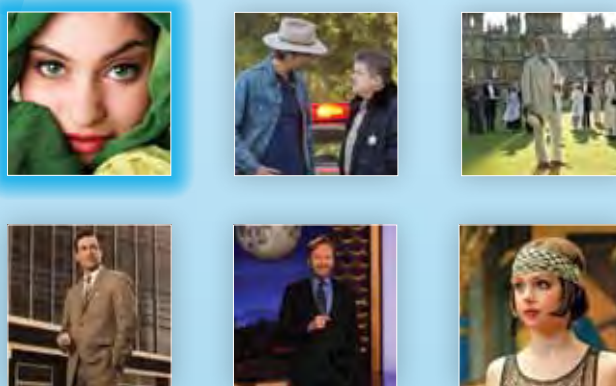
Seeing is believing.

Duo County's Digital TV offers an incredible inventory of HD channels with stunning quality — making your television entertainment experience exceptional. Our HD channel line-up grows every year. In 2013, we added popular HD channels TBS, CMT, The Weather Channel and E!, in addition to expanding our Video on Demand options. As a Duo Digital TV customer, you have the newest blockbuster movies and tons of local content and free programming at your fingertips!

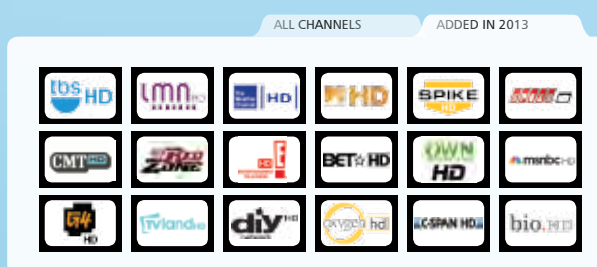


DUO TV GUIDE

MOST WATCHED



HD CHANNEL LINE-UP



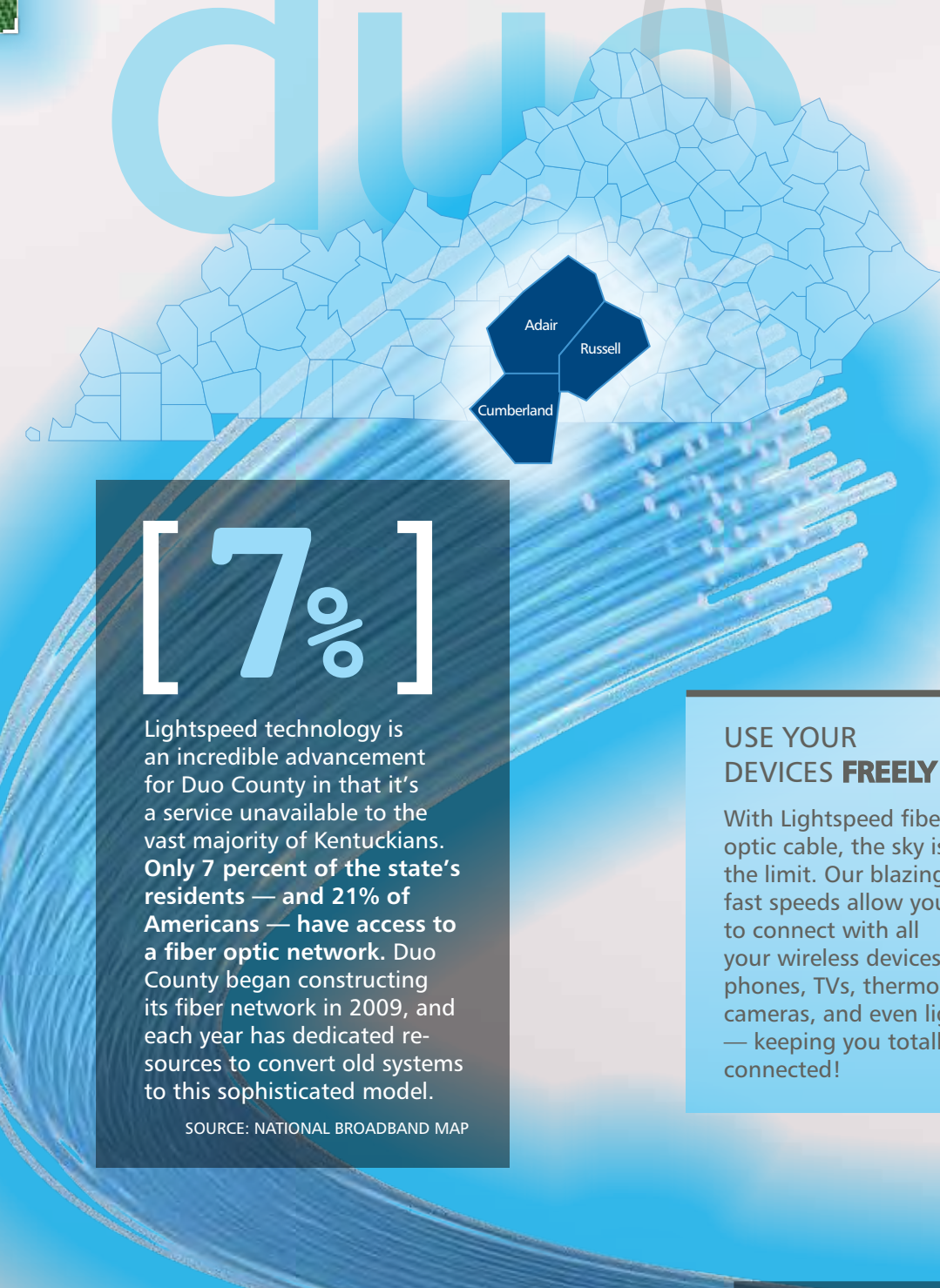
LIVE & LOCAL DUO2

Plate it Up!	7 p.m. Sunday
Columbia City Council	5 p.m. Tuesday
Lakers Baseball LIVE	2 p.m. Saturday
3 Trees TV	10 a.m. Saturday
LWC News Magazine	12:30 p.m. Monday

RECORD

Limitless capacity.

With accelerating Internet speeds and the ability to transport even more bandwidth in the future, Duo County's Lightspeed fiber optic network continues to amaze even us. Residential customers are using multiple devices in their home with ease, while our business customers are able to increase productivity and conduct fast, secure transactions. Through this new generation of communications technology, we transmit all of your Duo services — digital TV, Internet and telephone — through cables made up of hundreds of fiber optics, which are long thin strands of pure glass about the diameter of a human hair. Its reliability and longer life-span make it extremely cost efficient, and its flexibility keeps Duo County's telecommunications services at the forefront of technology!



[7%]

Lightspeed technology is an incredible advancement for Duo County in that it's a service unavailable to the vast majority of Kentuckians. Only 7 percent of the state's residents — and 21% of Americans — have access to a fiber optic network. Duo County began constructing its fiber network in 2009, and each year has dedicated resources to convert old systems to this sophisticated model.

SOURCE: NATIONAL BROADBAND MAP

USE YOUR DEVICES FREELY

With Lightspeed fiber optic cable, the sky is the limit. Our blazing fast speeds allow you to connect with all your wireless devices — phones, TVs, thermostats, cameras, and even lights — keeping you totally connected!



LIGHTSPEED NETWORK USAGE
DOWNLOAD SPEED: UP TO 12 MB
UPLOAD SPEED: UP TO 3 MB
NO. OF DEVICES: **[NO LIMIT]**

CALL CENTER

